

# **POCKET ELECTRONIC TRAVEL GUIDE TO THE WEST ORE MOUNTAINS**



- TIPS FOR TRIPS
- EDUCATIONAL TRAILS
- BICYCLE TOURING
- SKI RESORTS
- SWIMMING
- WHERE TO GO WITH CHILDREN
- WHERE TO GO FOR ADVENTURE
- MORE TIPS AND INTERESTING FACTS

Are you planning a holiday in the Ore Mountains and their surroundings?

Do you live in the west part of the Ore Mountains and their foothills?

Are you looking for tips for trips and entertainment?

Are you thinking about how to spend your free time in our region?

Accept our invitation to visit the west part of the Ore Mountains. The voluntary association of municipalities in the West Ore Mountains has been working in this area for a long time. The micro-region spreads from the Ohře river valley to the highest peaks of the Ore Mountains and contains a considerable cultural and natural heritage.

Our Pocket Electronic Travel Guide to the West Ore Mountains will help you find the right tip for you. Tourism has no borders and that is why the Guide also includes places in the vicinity of the associated municipalities. You can use the links to “click through” to the websites where you will find more detailed information.

## **SDRUŽENÍ KRUŠNÉ HORY - ZÁPAD (WEST ORE MOUNTAINS ASSOCIATION)**

Klínovecká 1407

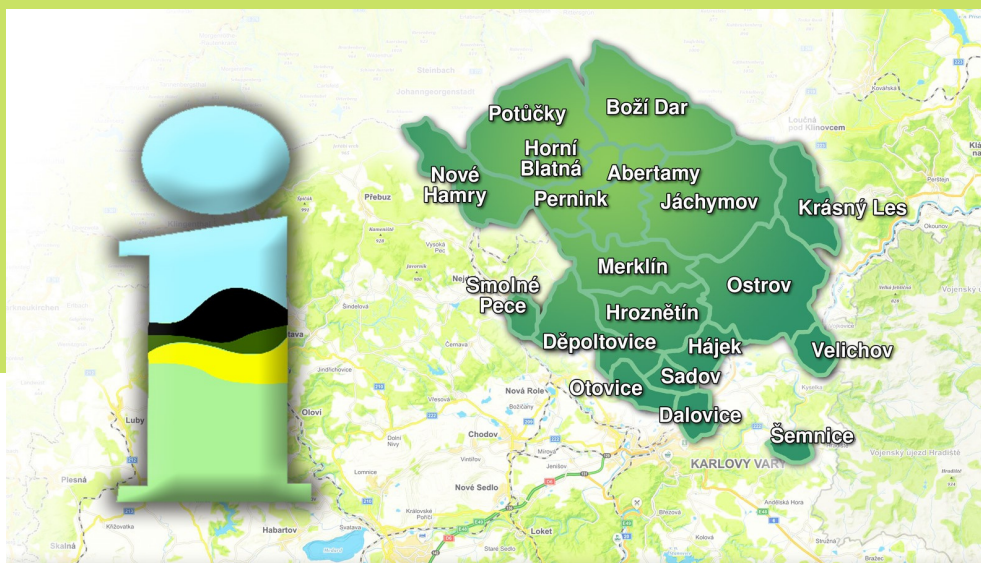
363 01 Ostrov

[www.skhz.cz](http://www.skhz.cz)



# WEST ORE MOUNTAINS ASSOCIATION

an association of twenty municipalities and towns  
in the west part of the Ore Mountains and the foothills

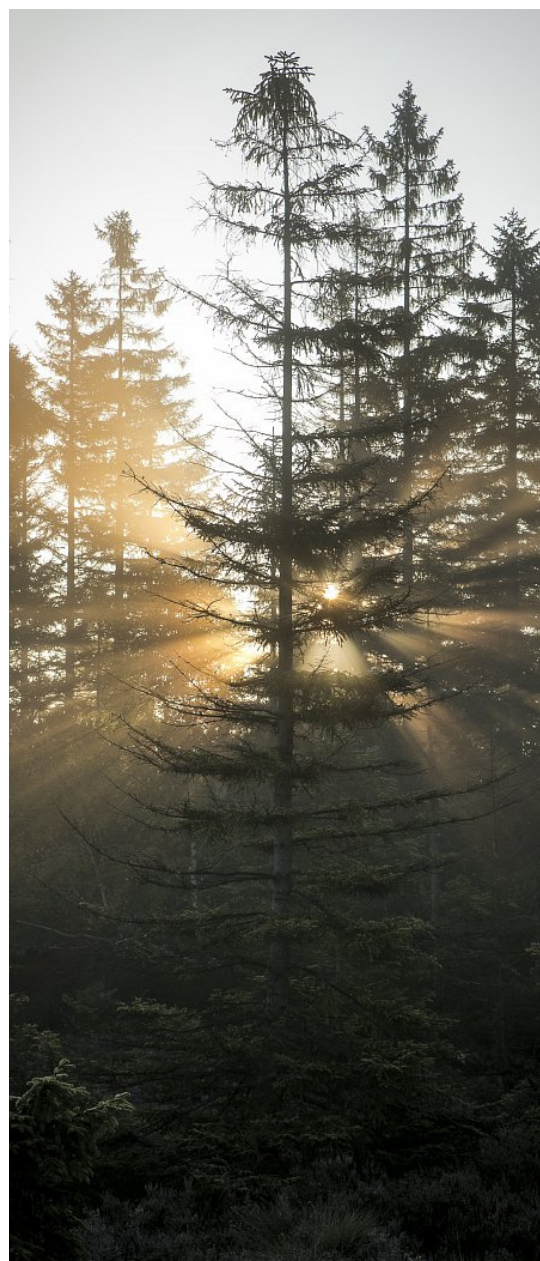


The West Ore Mountains Association was founded in 1994 in order to promote tourism, cultural, social and sports activities in the region.

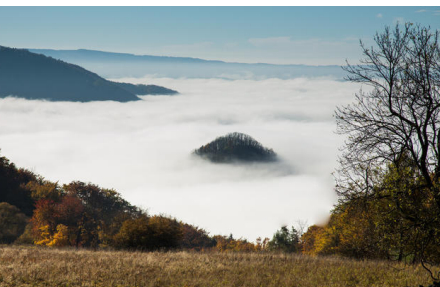
At present, the association includes a total of twenty municipalities and towns. The Guide provides some details of their history. It also offers natural and cultural landmarks, interesting facts and tips on how to enjoy your free time in our micro-region. Whether you live in the individual municipalities and the surroundings, or come for a holiday or a weekend stay.

The West Ore Mountains are an area with a rich history, architectural landmarks from various periods, small monuments in the countryside, a series of tourist destinations, educational trails, marked trails, water trails, cycling trails as well as ski resorts. It is an area that lies in the vicinity of the Spa Triangle that includes Karlovy Vary, Mariánské Lázně and Františkovy Lázně. The Ore Mountains Mining Region is inscribed on the UNESCO World Heritage List.

Come explore new places and enjoy their atmosphere and ancient mysteries.







## **05 MUNICIPALITIES IN THE MICRO-REGION**

Abertamy, Boží Dar, Dalovice, Děpoltovice, Hájek, Horní Blatná, Hroznětín, Jáchymov, Jenišov, Krásný Les, Merklín, Nové Hamry, Ostrov, Otovice, Pernink, Potůčky, Sadov, Smolné Pece, Šemnice, Velichov

## **10 EDUCATIONAL TRAILS**

trails in the micro-region municipalities - education and fun

## **14 NOT ONLY FOR CHILDREN**

where to go for adventure, swimming in winter, swimming in summer

## **19 TRIPS**

castles, châteaux, museums, lookout towers, the Spa Triangle, tourism and bicycle touring

## **25 WINTER ORE MOUNTAINS**

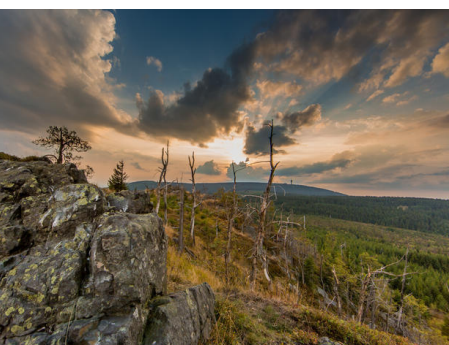
ski resorts, cross-country ski trails

## **27 INTERESTING FACTS**

The Town of Ostrov, the Ore Mountains Mining Region as a UNESCO site, Marcebila - the Patron of the Ore Mountains, Geofun - travel games with a mobile phone

## **32 ADDITIONAL TIPS**

a stop amid nature, home-made food, gastronomic experiences, cultural experiences, relaxation, an island of Scandinavian nature, an abandoned village







## Abertamy

The village was founded in 1529 as one of many mining towns, thanks to the silver deposits. However, the silver rush did not last long, mining silver started to decline in 1540s and 1550s. It was revived partially thanks to the mining of tin ores in the 18th and 19th century. The end of the mining activity incited home-made crafts and arts – wood carving, bobbin lace, but above all, glove making, the history and present of which you can learn about at the glove exposition in the town hall. The Church of the Fourteen Holy Helpers from 1534, reconstructed in the Baroque style in 1735-1738, is a landmark worth seeing. Abertamy lies at the foot of Mount Plešivec (1028 m above sea level), at the top of which you can find a mountain hotel and a sixteen-metre-high lookout tower built in 1895. Thanks to its position and altitude, Abertamy with the local district of Hřebečná is a paradise for lovers of winter sports, summer hiking and cycling.



## Boží Dar

The mining town with an altitude of 1,028 metres is the highest settlement in Central Europe. A legend says that miners found a large piece of silver there. And since they considered it to be a gift from God, they called the village Boží Dar. The town was founded in 1533 and silver was mined there until the Thirty Years' War. When mining was in decline, lace-making started to develop, as well as woodcarving and peat extraction. The town is adorned with the late Baroque Church of St. Anne. The sports area at nearby Klínovec (the highest peak of the Ore Mountains, 1,244 m above sea level) and Neklid are popular winter resorts. Boží Dar is also a centre for cross-country skiing, and for hiking and bicycle touring in summer. There are popular educational trails, such as the Boží Dar Marshland, Blatná Water Ditch and Baby Jesus Trail.



## Dalovice

At present, the municipality includes three merged villages - Dalovice, Všeborovice and Vysoká. It is situated near Karlovy Vary, at the confluence of the Vitický stream with River Ohře. The village was founded in 1498. Some of the interesting landmarks include the remains of a stone fort from the 13th century that used to protect an important trade route from Germany to Bohemia. You will find the memorial tree, Körner's Oak, in the local chateau park. It is estimated to be 700 to 900 years old, the diameter of the trunk is 887 centimetres and it is 18 metres tall. It bears the name of a German poet who used to visit Dalovice at the beginning of the 18th century, during his stay in Karlovy Vary. Other landmarks include the Old Chateau from the 16th century, the New Chateau built in the 19th century, and the Pseudo-Romanesque Church of Our Lady of the Consolation built in 1929 during three and a half months. You can explore Dalovice along the educational trail.



## Děpoltovice

The first mention dates back to 1273. There is an almost forgotten Empire chateau in the village, visited by Otto von Bismarck in 1863-1865. After 1945, the chateau was used for the operation of the state-owned farm and it gradually dilapidated. It is now in a state of disrepair. The local brewery, opened in 1915, experienced its golden era at the turn of the 20th century. The town is adorned with the late Baroque Church of St. Michael with original furnishings from the 18th century. The house "At Ströhrs", a two-storey half-timbered building in the Franconian style is an important cultural monument. There used to be a popular swimming pool in Děpoltovice, which had more than 300 changing rooms as early as in 1930. The village is a popular destination today.





## Hájek

The first written mention comes from 1409. The owners changed in the course of time, the village experienced both boom and decline. In 1978, its management was transferred to the central municipality of Sadov and Hájek gained its independence again in 1990. The village started to develop intensely after 2002. There are remains of an old fortress that was probably built in the 14th century, but the first written mention comes from 1567. In the nearby settlement of Nejda, there is the Chapel of St. John of Nepomuk. The five stars in the coat of arms represent his halo. Hájek is a good starting point for hiking and cycling trips, there is an interesting game preserve with mouflon and fallow deer nearby. The new gazebo invites to sit down and enjoy the view.



## Horní Blatná

An originally mining settlement and one of the most important centres of tin mining. It was founded in 1532, after some rich deposits were discovered at Blatenský vrch. The town museum has an exposition on mining and on the history of the town. The Church of St. Lawrence is an important landmark; it received its current look in 1754. Adjacent to the church, there is a square tower, with hexagonal plan at the higher storeys, built in 1607. There are several technical monuments from the era of intensive mining in the 16th century, such as Vlčí jámy, the remains of mining shafts (covered by ice even in summer!) and the Blatná Water Ditch. This unique water canal used to bring water for the needs of ore mining from Boží Dar.



## Hroznětín

In 1213, Ottokar I of Bohemia donated this settlement to Hroznata, the founder of the Teplá Monastery, for his military achievements. He later donated his estates and property to the Monastery. And so Hroznětín came into the hands of Premonstratensians. In 1386, it was promoted to a town. At the square, you will find the Church of Sts. Peter and Paul. The Jews started to settle in the town as early as in the 15th century and they built the Jewish town, a synagogue and a cemetery, one of the oldest ones in Bohemia. The Jewish landmarks were mostly destroyed during WWII and the dilapidated synagogue was demolished in 1956. It is possible to see what is left of the Jewish cemetery near the town. The nearby settlement of Velký Rybník with a water reservoir of the same name is now a popular recreational area.



## Jáchymov

Its foundation dates back to 1516 when highly prominent silver mines opened there. Sankt Joachimsthal, as it used to be called, was caught in a real silver rush. Jáchymov reached the peak of its boom in 1533 and it became the second most populated town with a population of 18 thousand in Bohemia, with Prague being the first. The American dollar got its name from the thaler that was minted in Jáchymov as early as in 1520. In 1517, the Freudenstein Castle was built above the town as a home to royal upper governors. It was destroyed by fire in 1636; only two round towers and ruins of the circular bastion survived. The oldest landmark is the hospital All Saints Church. There is a museum with an exposition on coining and mining and the "Jáchymov Hell", the 1950s labour camps where tens of thousands of people, including political prisoners, mined uranium. The discovery of radium started a new era of the town. The curative effects of radioactive water predestined the foundation of the first radioactive spa in the world.





## Jenišov

The village was founded in the 14th century as a medieval farming settlement. There used to be a mill where local farmers used to bring their grains in the Middle Ages. Most of the local inhabitants cultivated the land and bred cattle. The village grew considerably starting in the mid-19th century. The boom was brought about by lignite and kaolin mining. A total of 19 mines were gradually founded in the village. The decline in mining started after 1928, due to the economic crisis. In 1930s, wild coal mining spread there. There were hundreds of illegal miners working in the abandoned mines. Those miners undermined the road between Karlovy Vary and Cheb near Jenišov so much that it collapsed. The centre of the village with a chapel and the former water mill along the Chodovský stream are architecturally valuable. The continuous complex of walls is an interesting technical landmark.



## Krásný Les

The first record of the village dates back to 1226. There is the Church of Sts. Peter and Paul, built probably as early as in the 14th century. It burned down in 1982 and it was later reconstructed. Reportedly, the royal Hauenštejn Castle, today the Upper Castle, was founded east of the village in the second half of the 13th century as one of the border strongholds. The new castle owner, who bought it in 2000, started to repair the abandoned castle with vigour and he has opened the castle to the public and continues to restore it with the help of his friends and hundreds of volunteers. The castle has become an important cultural and tourist centre.



## Merklín

The settlement was founded thanks to the economic interests of the Teplá Monastery that obtained the whole area thanks to the military achievements of its founder, Lord Hroznata. The first mention dates back to 1273. In 1870, the first industrial porcelain factory was founded there, and in 1888, the first paper mills were built in Merklín and nearby Pstruží. The railway was brought to nearby Karlovy Vary in 1902. The mountain educational trail that starts in front of the local railway station provides information on the area of the Kaffské Mountains, views of the mountains and peaks, mountain meadows and forest nooks. The municipality has another educational trail that goes through the rock formations near Merklín. It is called after the mammoth.



## Nové Hamry

It lies at an elevation of 690-850 m above sea level. The village was founded by miners in the 15th century. In the 16th century, the local Soví ironworks used to make glass stained with cobalt. Mining ceased to exist in the mid-19th century. The town is adorned with the Church of St. John of Nepomuk from 1789. The stone lookout tower at the Tisovský Hill, also called Pajndl, offers a view of the entire west area of the Ore Mountains, Doupovské Mountains, Slavkovský and Český les, the Bavarian Fichtel Mountains, and also Karlovy Vary. There is a small ski resort at the hillside of the Dvorský Hill. The nearby Jelení vrch nature park is a popular summer destination. The part also includes the settlement of Jelení, the remains of a German village displaced after WWII. There is a provisional altar in the place of a demolished church.







## Ostrov

Ostrov is the largest town in the foothills of the central part of the Ore Mountains. The historic centre is an urban preserve. The old town is dominated by the originally Gothic chateau, reconstructed in the Baroque style. Next to the chateau, there is the Prince Palace with a unique Diana bath. There is an early Baroque summer house with richly decorated interiors in the chateau park, which used to be called the eighth wonder of the world at its time. The dominant features of the Old Square include the town hall from 1569 and the Church of St. Michael built in 1617. At the edge of the historic centre, you will find the premises of the Piarist Monastery from 1673 with a famous grammar school. After 1945, Ostrov expanded as a housing development for the miners working in the Jáchymov mines and for the employees of the Škoda plant where trolleybuses were manufactured. In the course of a few years, a new town was built in the traditionalistic style of the 1950s with an ostentatious Community Hall at the large square. Ostrov is the cultural centre of the region and it is also where the Ota Hofman's Children's Film and Television Festival takes place. You can visit the national cultural monument called the Tower of Death in nearby Vykmánov.



## Otovice

The village was founded in the 14th century as a medieval farming settlement. In the 19th century, workers and miners also used to live there besides farmers and tradesmen. There was a factory that manufactured chemical products, cardboard and wood cement. The vicinity of the village bears the signs of historic surface lignite and kaolin mining. The former Excelsior underground mine where kaolin used to be extracted is located in the south of the village. There is a former quarry, now flooded, in the west of the village. Today, it is used by the locals as an outdoor swimming pool and people call it Jáma. In 1976, Otovice was affiliated with Karlovy Vary for a temporary period, it is now an independent municipality again. In addition to the pleasant environment, you will also find one unique landmark there: a dog cemetery. It was founded at the turn of the 20th century at an impulse of a spa guest whose life was saved by a German shepherd.



## Pernink

It was founded thanks to the extraction of non-ferrous metals. A legend says that a bear, which is a symbol in the coat of arms, dug out the first lump of tin ore in the 16th century. After the end of mining, Pernink became a centre of crafts, bobbin lace and embroidery production. The Church of the Holy Trinity is the dominant feature of the village. It has an Alpine-style tower and it was consecrated in 1716. Another interesting landmark is the stone viaduct with six arches, reaching the height of 20 metres at the highest point. It is a technical monument, the highest built construction on Czech railways. The local railway station is the second highest railway in the Czech Republic and it is at an altitude of 902 metres. Pernink is a centre of winter sports and offers groomed cross-country skiing trails that connect to the major Ore Mountains trail. There are two small ski resorts there.



## Potůčky

It is a municipality on the state border with Germany - Saxony. The ownership of the village alternated between the Bohemian Crown and Saxony in the 15th and 16th century. The Protestants left the area after 1620 to found the famous mining town of Johanngeorgenstadt. They used to mine tin, silver and iron there, and later they manufactured cobalt dyes for glass and ceramics. The village of Potůčky was not founded until after 1654, along the Černý and Hraniční streams. The introduction of railway from Karlovy Vary in 1899 brought a great expansion. The village is adorned with the Church of the Visitation of Our Lady, completed in 1911. A pedestrian border crossing opened after 1989. Since then, Potůčky has been an important tourist centre and a popular shopping centre, today also offering a summer sports facility and a smaller ski resort, in addition to bargain shopping. In 2008, a vehicle border crossing was also opened.



## Sadov

The municipality, which includes the districts of Lesov, Podlesí, Bor and Stráň, lies about midway between Karlovy Vary and Ostrov. The preserved documents show that the oldest settlement was in Bor, founded in 1342. The discovery of kaolin and the opening of coal mines were fundamental for the development of the village. It was first Težařstvo Leopold a Frisch (1898-1922), then Důl Leopold - Sadov (1918-1957). This industrial activity strengthened the village enough to become an independent municipality in 1930, later integrating the surrounding villages. The Church of St. Mary Magdalene in Bor, built around 1260 in the early Gothic style is, no doubt, the most interesting landmark. It was later reconstructed in the Baroque style and a new tower was added to the west façade. There are also two chapels in the municipality, one in Stráň and one in Sadov, the latter built in 1788.



## Smolné Pece

The settlement in a large clearing near Nejdek used to be called Pechöfen. As the name suggests, there probably used to be houses of resin producers there, as resin was frequently used by coopers, shoemakers and other craftsmen in the past. The locals used to make a living by collecting and melting resin in special "resin furnaces". The foundation of the settlement dates back to 1872. Smolné Pece is the most modern and also one of the smallest municipalities in the Karlovy Vary Region. There are about 150 residents there. But there are numerous summer houses and cottages. Smolné Pece lies in a beautiful forested countryside, offering a lot of opportunities for trips and hikes.



## Šemnice

The first written mention comes from 1239 when the village was donated by Boleslav I of Rýzmburk to the Osek Monastery. In the past, silver was mined and limestone was burnt around Šemnice. You can also find the mysterious gnomes' rocks, cavities in the rock, in the local district of Dubina. Today, most geologists believe that the holes were created by weathering of fallen trees in the volcanic sediments. There is a legend about gnomes who used to guard a treasure there. The countryside has a distinct prominent feature: the mysterious and legendary Šemnická Rock with views of the Ore Mountains and Doupovské Mountains. There are rare thermophilic plants there, and it is a nesting place of the Eurasian eagle owl.



## Velichov

The village belonged to the Doksy Monastery as early as in the 12th century, later it was owned by the Upper Castle. The first written mention dates back to 1226. Some of the landmarks worth mentioning include the chateau from 1755, the Church of the Assumption of Virgin Mary and the Renaissance tombstone of the noble Traugott of Mangolt from 1572. Doctor Josef Löschner, a physician, balneologist and famous promoter of the Kyselka Spa is buried at the local cemetery. Friedrich Dionys Weber (1766-1842), a music composer, who founded the Prague Conservatory and was the first principal there was born in the village. The majestic peak of Thebisberg (Děvín, Děvice) rising high above the village and you can find the remains of a massive guard hillfort there, populated at the time of the Knovíz Culture and Slavs as well. There is another hillfort on top of the Košťál Hill on the opposite bank of River Ohře, towards Radošov.



# EDUCATIONAL TRAILS

## Abertamy

### Plešivecká Educational Trail

The trail passes through a forested countryside to the peak of Plešivec, a prominent feature that can be seen from afar. From there, it continues via Pstruží through the romantic and quiet valley of River Bystřice back to Abertamy. It is a loop trail, 8 kilometres long, and there are eight stop with information boards. You can take the trail in both directions. It takes about 3.5 hours. Medium difficulty.

### Hřebečná Educational Trail

It goes through sites where tin used to be extracted in the past. The massive depressions of old mining fields and other relics of mining end in a quarry with distinct columnar basalt separation. The trail is 3.8 kilometres long, it mostly follows paved roads and there are eight stop with information boards. You can extend the hike through the forest towards Bludná where tin and iron ore used to be mined. You can get back to Hřebečná along the red tourist trail. Walk past the depression of the Červená jáma underground mine where you will find a fairytale cottage with refreshments all year round.

### 17 Abertamy Stops Educational Trail

The trail will take you through the most interesting places in Abertamy. The information boards include stories and legends from the 19th and 20th centuries (silver mining, relationships of miners to other craftsmen, legends about the knights from the rocks, glove making, etc.). The trail was inspired by the book called "Twenty-five Funny Stories from Abertamy" written by local photographer Alexandr Wüst. Wüst first made special Abertamy lemonade and later opened a photo studio in Abertamy. The individual boards contain ingenious drawings by Pavel Rak and period as well as contemporary photographs. The trail is 7 kilometres long and it takes about 2 hours.

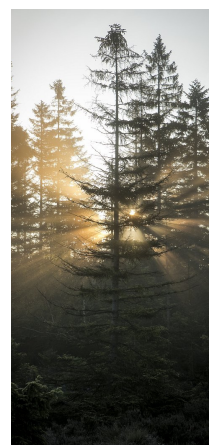
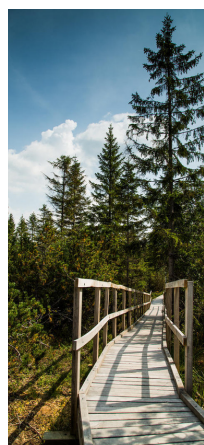
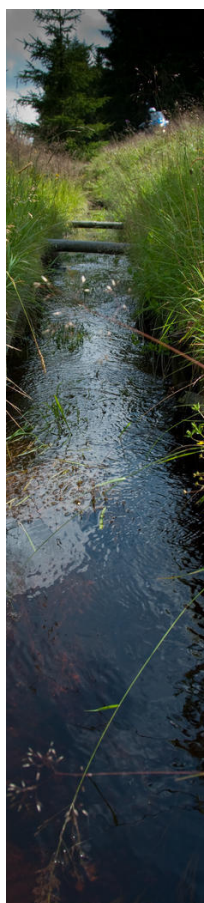
## Boží Dar

### Boží Dar Marshland Educational Trail

The trail goes through a part of the Boží Dar Marshland nature reserve that has been declared an internationally significant marshland under the Ramsar Convention. The trail is 3.2 kilometres long and it starts at the Boží Dar Information Centre, where the first information board is located. Most of the trail follows a boardwalk that ensures both safety of tourists and protection of the marshland and rare animal and plant species that live there.

### Blatná Water Ditch Educational Trail

The construction of the Blatná ditch started in 1540 and it took four years to complete it. This unique water work supplied water to the Ore Mountains mines and later to the industrial works. In 2017, the Blatná ditch was declared a national cultural monument and it was reconstructed in 1995-2001. The canal, about 12 kilometres long, is lined with an educational trail with 23 stops. It starts about 1.5 kilometres after Boží Dar and ends near Horní Blatná, it is 11.5 kilometres long.



#### Links

Abertamy Trails

Boží Dar Marshland

Blatná Water Ditch

Geofun



*You can hike the trail with a game in the Geofun mobile application for more fun. Your guide will be Šimon, a descendant of the builder of the Blatná ditch, Stephan Lenk.*





# EDUCATIONAL TRAILS

## Dalovice

### Dalovice Educational Trail

It describes the history and present of the Dalovice municipality. The trail with ten stops will take you to the most interesting places you can find here. For example, the chateau park with a majestic memorial tree, Körner's Oak, which is estimated to be 900 years old, or the Church of Our Lady of Consolation that only took three and a half months to build. You can read the legend about the stone knight at the scenic gazebo, the stop in Všebořovice offers a view of Karlovy Vary.

*You can hike the trail with two games created in the Geofun mobile application for more fun. Poet Theodore Körner is the guide in the shorter game. The longer game is guided by Baron and Baroness von Riedelstein who were important in the history of the village.*

## Horní Blatná

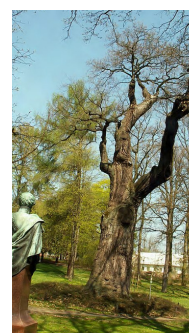
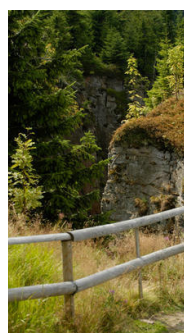
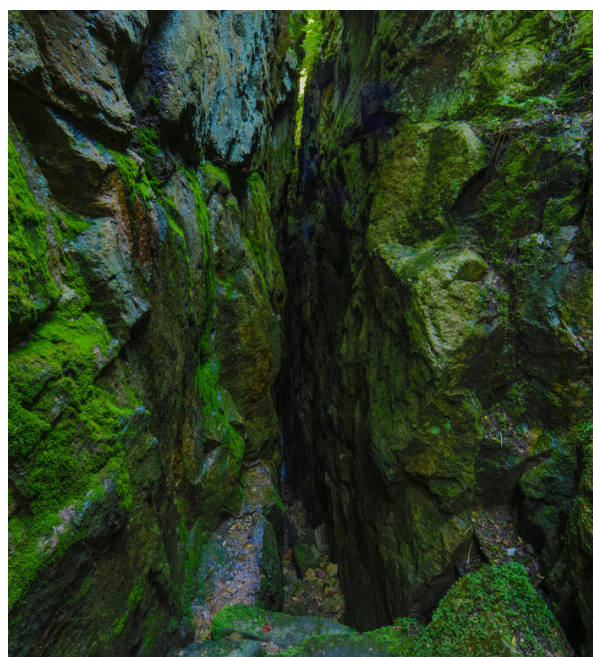
### Horní Blatná - Vlčí jámy Educational Trail

Learn about the surroundings of the old mining town. Seven stops will take you through an area of pits and depressions, with an underground intertwined with a network of shafts and adits. You will visit the artificial Blatná Water Ditch and the peak of the Blatenský Hill with a lookout tower. The trail also includes the Vlčí jámy nature preserve. It is 3.7 kilometres long.

## Hroznětín

### Hroznětín Stops

There are two hiking trails. You will learn about the history of the town and interesting landmarks in its surroundings. The first trail is easy, it is four kilometres long with ten stops along the way. You will learn everything you should know about the history of Hroznětín along this trail. The second, more difficult trail is seven kilometres long and it will take you through the local legends. Along the trails, you can visit the Church of Sts. Peter and Paul, Flaschner's Chapel, a Jewish cemetery and the recently renovated Gloriett gazebo.



### Links

Dalovice Educational Trail  
Geofun Trail  
Geofun Oaks



# EDUCATIONAL TRAILS

## Jáchymov

### Jáchymovské Hell

It commemorates the lives of thousands of political prisoners from the nearby labour camps by the uranium mines. There were eighteen prison camps around Jáchymov and Horní Slavkov established between 1949 and 1953. The trail is 8.5 kilometres long and there are 12 stops where you can learn not only about the uranium mines and labour camps, but also about the nature and ecology in the Ore Mountains.

### Radon Trail

A unique educational trail that provides detailed information about radon, the radioactive gas. The three-kilometre-long trail with nine information boards commemorates the legacy of Jáchymov and also points out that radon in homes is the second most significant cause of lung cancer. The trail also informs on how to protect oneself from the effects of radon and how it is used in treatment. The trail was founded by the town of Jáchymov as well as the State Office for Nuclear Safety, the Ministry of Industry and the Czech Technical University in Prague.

### Ore Mountains Landscape

The trail leads through the Ore Mountains countryside with deep valleys, steep hillsides and large forests. There are 19 information boards installed on the route that is almost 10.5 km long. They provide a lot of interesting facts about the history of silver mining and geology. As well as information about the fauna and flora of the Ore Mountains. It can be hiked in three to four hours. Some sections of the trail are accessible to mountain bikes and cross-country skiers in winter.

## Krásný Les

### Upper Castle Educational Trail

The trail takes visitors around the Upper Castle, following paths that used to be inaccessible, with romantic views of the castle. There are eight information boards that explain the history of the castle and its surroundings. The trail is suitable for families with children and school trips. It is 2 kilometres long.

## Merklín

### Merklín Mountain Educational Trail

It focuses on history, geology and nature. The loop with eight stops, almost 8 kilometres long, starts in front of the railway station in Merklín. The trail will lead through deep forests and vast mountain meadows, with amazing views of the local peaks and ruins of abandoned villages. Visitors will see, for example, the former villages of Upper and Lower Kaff.

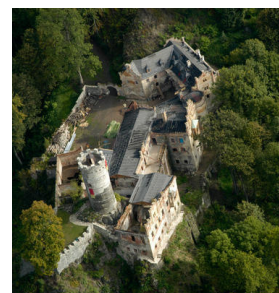
## Nové Hamry

### Hamerská Trail

It leads through the Ore Mountains and offers some nice views along the way. It informs of the history, geology, mining and nature in this area. It is a 6-kilometre-long loop with eight stops.

### Rupert Fuchs' Educational Trail

The trail concentrates on mining, history and life in the Ore Mountains settlements, and on the history and interesting facts of the Karlovy Vary – Johanngeorgenstadt railway. It is called after a native of Nové Hamry – photographer Rupert Fuchs who documented the landscape and villages of the Ore Mountains before WWII. His photographic postcards with more than 2,000 landscape images were well known in the west Ore Mountains at that time.



### Links

*Merklín Mountain Educational Trail*

*Jáchymov Hell*

*Radonov Trail*

*Ore Mountains Landscape*

*Upper Castle*

*Hamerská Trail*

*Rupert Fuchs' Trail*





# EDUCATIONAL TRAILS

---

## Karel's Educational Trail

If you walk along this educational trail, you will learn about the legends of this region and interesting facts related to the features of the surrounding countryside, such as River Rolava, monumental rock formations, or the geological composition of our mountains. Visitors will also learn about the history of mining, history of skiing or smuggling. The trail starts opposite the Seifert Hotel, there are 16 information boards in total with benches to rest. The texts in Czech and German are also accompanied with interesting photographs. It is a part of an international cycling trail between the towns of Aue and Karlovy Vary. Considering that it is about 12 kilometres long, this educational trail is mostly designed for cyclists.

## Ostrov

### Ostrov Region and Mining Educational Trail

It is a part of the Silver Trail that leads along the Czech and German side of the border. The educational trail starts near the Ostrov Chateau, there are five stops and it leads all the way to Vykmanov. It describes the development of mining in the history of the town.

### Borecké Ponds Educational Trail

The trail will take you through the area of the Borecké Ponds. You will discover the history and present of the area, as well as interesting nature facts, important plants and animals living in the area.

### Along the Old Roads around Ostrov Educational Trail

The trail takes you on a walk around the town of Ostrov and informs you of the local history, landmarks and traditions. The trail is designed both for hikers and cyclists and there are 20 stops with information boards and tourist maps, it is almost 30 kilometres long.

## Pernink

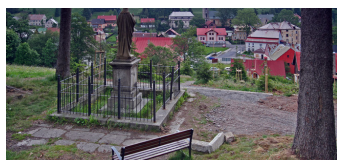
### Forest Park and Ore Mountains Mining Trail

The restored forest park is an important natural monument, established between the world wars. The "snail hill" is probably the most important part of the forest park. It was inspired by a similar garden design in the Flower Garden in Kroměříž. There are 17 information boards that mention the interesting landmarks along the educational trail. It is about 14 kilometres long. It can be divided into three shorter trails. The attractive stops along the trail include the contribution granary, a local marshland, a ski slope, a railway viaduct, or the Dragon Rock.

## Potůčky

### Potůčky Mountain Educational Trail

The trail will take you through the diverse terrain along overgrown forest paths, comfortable paved roads and hard asphalt roads. It is dedicated to the history of Potůčky, Johannegeorgenstadt and long abandoned villages, mining, as well as the local fauna and flora. It is a 12.5-kilometre-long loop with fifteen stops.



---

### Links

*Karel's Educational Trail  
Ostrov Educational Trails  
Ore Mountains Mining Trail  
Forest Park  
Potůčky Mountain Educational Trail*





# NOT ONLY FOR CHILDREN

## WHERE TO GO FOR ADVENTURE

### Baby Jesus Trail

The small town of Boží Dar is a famous Baby Jesus's town. There is a Baby Jesus's post office that sends letters stamped with the symbol of Baby Jesus all over the country. And you can go for a hike with Baby Jesus. It has two routes. The small one is 5.6 kilometres long, the large one is 12.9 kilometres long. The trail has 13 stops and you will find them by the nice little cottages if you follow the marked paths. Children can do an interesting task in each cottage. In some of them, they will be asked to recognise animal tracks, in others trees by leaves or fruit, or they will be asked to guess what is right or wrong, or what goes together. Baby Jesus and his helpers await children at all the stops. The information centre sells a notebook for writing down the tasks. The trail is lined with fairytale characters, benches inviting to sit down and various climbing structures for children.

*You can hike the trail with a game in the Geofun mobile application for more fun. Naturally, Baby Jesus is the guide*

### Novako - Boží Dar Family Resort

The area is divided into two parts. The "Children's World" is full of various attractions such as bounce houses, a stream with water gates, crossbow shooting, a small maze, trampolines, skittles, jungle gym for the littlest ones, croquet lane, etc. The rope climbing track full of unusual obstacles is the most popular attraction. The second part of the resort offers mountain carts and scooters. Get on the rope lift to get to the top of the hill and you are free to head down. There is a rental shop where you can get mountain bikes, electric bikes, balance bikes and electric four-wheelers for children, there are also refreshments and a small bike service shop.

### Ore Mountains Legend Trail

At Plešivec, there is a trail, about a half-kilometre long, lined with carved sculptures of the mythical characters of the Ore Mountains. The trail was inspired by collected legends about bogeymen, gnomes and other creatures living in the Ore Mountains. You will also find benches along the trail, with wonderful views, such as the view of Ostrov or Velký rybník.

### Plešivec Rope Climbing Centre

A place where you will find fun, rest and new unusual experiences. A huge swing, a bungee trampoline, or a free fall from the height of thirteen metres. The rope climbing centre is in a forest, on trees, at the height of 4 to 12 metres. There are various bridges among the trees, climbing structures, rope obstacles, zip lines, footbridges and other surprises and challenges. There is a small rope climbing centre for children and a playground. You can get some food in the local cafeteria or in the hotel restaurant.

### Oberwiesenthal Spa

The highest German spa near the border with Boží Dar offers sports facilities, a museum, supermarkets and shops, a lookout tower, a craft workshop and other interesting landmarks and activities. Every day, you can hop on a steam train that rides along the narrow-gauge Fichtelbergbahn railway. A ride in a train with a steam engine, in carriages made between 1913 and 1932, is a great experience, not only for children. There is a bobsleigh track, open from spring to autumn. It is closed when the weather is bad.



#### Links

Baby Jesus Trail  
Novako Family Resort  
Plešivec Rope Climbing Centre  
Oberwiesenthal Spa  
Geofun



# NOT ONLY FOR CHILDREN

## WHERE TO GO FOR ADVENTURE

---

### Hájek Game Preserve

There is a game preserve near Hájek where you can find fallow deer, mouflon and boars, it goes all the way to the municipalities of Velký Rybník and Sadov. It is best explored along the 5.2-kilometre-long educational trail. There are four stops with information boards focused on dendrology, i.e., trees, and the bred and wild animals and birds. The trail follows asphalt or paved roads and it is easy, suitable for any age.

### Pegas

Pegas in Děpoltovice is a resort for agricultural tourism and you can go there for an afternoon horseback riding or stay at the guesthouse and enjoy your holiday with horses. They also offer horse-drawn carriage rides. There is a mini-museum of horses on the premises where you can learn some basic facts about horses. The Pegas trail is 4 kilometres long and it will take you around Děpoltovice, either on a horseback or on foot. It is inspired by an ancient Greek myth, you can read about on the information boards. There is also some information on the construction of the resort, what horses they breed there and also on the successes of the Pegas riding school. Each information board presents a wise thought related to horses and the last one contains the well-known and true "Prayer for Horses".

### Jáchymov Mill Valley

There are about 70 mills of various shapes and forms along the small mountain creek. Some of them look like the Svornost mine shaft hoists, the Chapel of St. Anne or the local voluntary fire brigade's truck. This peaceful and quiet corner of the Jáchymov woods, which you can find behind the Radium Palace spa hotel, invites to rest on a bench, or take a stroll further into the woods. They say that the mills have been put there since the first spa was founded, which was over a hundred years ago.



### Rafting Ohře

River Ohře is one of the most popular Czech rivers for water sports. The rental shop offers suitable vessels for experienced rafters as well as beginners. And also trip options.



### U Hafíka Children's World

The largest entertainment centre in the Karlovy Vary Region. It comes especially handy when the weather is not good. There are a lot of attractions, bounce castles, small and large slides, a ball court, climbing castles, X-box game consoles, a baby zone, small vehicles such as racing cars and motorcycles, a Gladiator arena, a SUMO arena, a climbing wall, billiards, air hockey and much more. So, entertainment not only for children.

### Fata Morgana Museum of Illusions

The world of unbelievable optical illusions can be experienced in the museum where visitors become a part of the exposition. There are two museums, one in Karlovy Vary and one in Františkovy Lázně.

#### Links

Hájek Game Preserve  
Pegas Horse Riding Club  
Jáchymov Mill Valley  
Rafting Ohře  
U Hafíka Children's World  
Fatamorgana





# NOT ONLY FOR CHILDREN

## WHERE TO GO FOR ADVENTURE

### Mattoni's Trail "In the Footsteps of Gnomes"

The educational trail provides visitors information on the history of the Kyselka Spa and the buildings that are being gradually renovated. The educational trail mostly follows the original promenades from the times of Heinrich Mattoni when they used to be used by tourists a lot and that are now accessible. The trail points out abandoned places of rest, scenic views, parks, gazebos and provides more information on the buildings.

The large information boards contain a comic strip with an interesting story, with gnomes being the main characters. Near the trail, you will find the Gnomes' Rocks and the gnomes were also a symbol of the protectors of the mineral springs. Mattoni's trail is 3.6 kilometres long. Most of the trail is also accessible to strollers and small children. The sections between the individual scenic points are more rugged.

### Ekocentrum Ostrov

The ecological centre in Ostrov is basically a small zoological garden where you will find more than 50 animal species – goldfish, small rodents, reptiles, spiders, exotic birds and birds of prey, small predators, sheep and poultry. In the morning (outside the regular clubs), you can tour the indoor and outdoor enclosures and you can even touch, hold or feed some of the animals by agreement under expert supervision. The area also includes a relaxation garden with a pond and seating, playground, or the unusual trail for bare feet.

### Sportpark by the Ostrov Hospital

The area of Sportpark Ostrov, which is located next to the hospital, is much more than just a playground for children. In addition to slides, sand boxes and climbing structures, there is also a climbing wall, a rope climbing centre for children, an air trampoline, a multi-purpose sports field, a pétanque field, a maze and an herb garden. And moreover, all attractions are free.

### For Bowl - Ostrov

A modern leisure centre. There are four professional bowling alleys by Brunswick, the Shuffle-board game, table football, table hockey, darts, a snooker and a bar.

### Ostrov Winter Stadium

The covered ice rink with dimensions of 28 x 56 m is open to public ice-skating from September to April. Find the current public ice-skating weekly schedule on the website of MDDD Ostrov. The winter stadium does not have an ice-skate rental shop.



#### Links

Mattoni's Trail  
Ekocentrum Ostrov  
Sport park Ostrov  
For Bowl - Ostrov  
Ostrov Winter Stadium





# NOT ONLY FOR CHILDREN SWIMMING

## Swimming all year round

### Aquacentrum Agricola Jáchymov

A swimming pool with two 25-metre lanes, Kneipp's path, a rehabilitative pool, a tunnel slide, water slides, an outdoor terrace and a children's pool with a waterfall. The centre also includes a cosy café, a salt cave, a cryotherapy cabin and it offers massages. The unique "Sauna Mine" world is inspired by mining. The sauna mine shaft offers steam saunas, infra-red sauna, herbal and Finish saunas. There is also a cooling pool with a Kýšovický waterfall, or an adventure shower. Visitors can use a whirlpool with relaxing settings, a rest room with heated benches, or a dark rest room with a fireplace. There are roof terraces and the sauna ritual of whipping, provided at designated times.

### KV Arena Swimming Pool Centre

The nearby Karlovy Vary pool can be used all year round. There is a 25-metre-long pool with six swimming lanes, a smaller learning pool, a tunnel slide, a whirlpool, a steam room, sauna and infra-red sauna. The large pool includes an underwater massage bench and bed, spouts, wall and bottom massage jets for underwater body and feet massage, and a Jacuzzi. Swimming all year round just around the corner

## Swimming all year round just around the corner

### Aqua Marien Marienberg

A wave pool with a canal, two outdoor heated pools, a tunnel slide, pools for children and babies, a Finnish sauna. There is a special attraction, the huge "Crazy River" slide. You can slide down the stream on a ride tube. There is a restaurant there.

### Aquaforum Františkovy Lázně

Pools, whirlpools, water slides, a mixed Finnish sauna and a snack bar.

### Aquasvět Chomutov

The water park includes an irregularly shaped pool with a wild river (a stream canal), massage jets, a rocking pool, a slide, massage benches with bubbles, a climbing net, a water wall, massage beds with bubbles, a bubbling geyser, a water bell, spouts, waterfalls and a water cannon. Another area of the park includes a whirlpool and a wading pool with a pirate ship slide. The adrenalin part of the area contains two tunnel slides, one standard and one with tubes. There is also a 25-metre-long swimming pool with eight lanes.



### Odkazy

Aquacentrum Agricola Jáchymov

KV Arena Swimming Pool Centre

Aqua Marien Marienberg

Aquaforum Františkovy Lázně

Aquasvět Chomutov



# NOT ONLY FOR CHILDREN SWIMMING

## Swimming in summer

### Ostrov Outdoor Pool

A large 50-metre pool, a small pool, a wading pool and a 62-metre tunnel slide. There are changing rooms, outdoor showers and refreshments.

### Děpoltovice Pond

A natural swimming pond. A sandy and grassy beach that is regularly groomed. There are changing rooms, benches, mobile WC, a roofed gazebo and a children's playground.

### Jáma

The former flooded quarry by Otovice provides good conditions for swimming, with grassy beaches.

### Velký Pond

A natural swimming pond near Hroznětín. The sandy and grassy beach is regularly groomed. There is a children's playground. There are several catering options in the vicinity. The Velký Pond is a popular locality with fishermen.

### Černé Lake

Near Lužec, you will find a crystal-clear lake with peat subsoil suitable for swimming.

### Nová Role Pond

A natural swimming pond that covers an area of 20 hectares can be found near the town of Nová Role. There are not very many services there but it is sufficient for visitors who prefer swimming in nature. The beach is sandy with a gentle slope into the water. It provides great conditions for fishing and surfing.

### Am Schwefelbach

Near the town of Potůčky, in the neighbouring Johanngesorgenstadt, you will find a natural swimming pond in a beautiful environment, surrounded by a spruce forest, inviting you to stay and rest in this large area. Families with children will enjoy the children's playgrounds with tunnel slides, there are changing rooms, sanitary facilities and refreshments there.

## Swimming in summer just around the corner

### Aquapark Klášterec nad Ohří

A modern area built at the foot of the Ore Mountains, swimming in the crystal-clear water can be even more fun with the tunnel slides at various lengths (28, 68 and 128 m), there are pools of different sizes, shapes and depths for all family members. There are also diving boards, wild river, slides, water mushrooms or massaging bubble baths.

### Michal Outdoor Pool

A modern water park with many attractions located near Sokolov by the road between Karlovy Vary and Cheb. The locals call it the Sokolov Sea. Not only thanks to the sandy beach that is more than 500 metres long. Besides the beach, visitors can look forward to interesting attractions for children and adults alike, such as a giant tunnel slide, sports opportunities, great facilities, refreshments, but above all, a sea of clean water.



### Links

*Ostrov Outdoor Pool*

*Děpoltovice Pond*

*Jáma Otovice*

*Velký Pond*

*Nová Role Pond*

*Am Schwefelbach*

*Aquapark Klášterec nad Ohří*

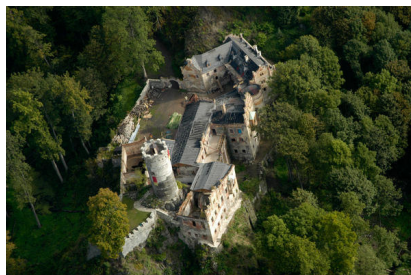
*Michal Outdoor Pool*



# TRIPS

## CASTLES, CHATEAUX, RUINS

---



### Upper Castle Called Hauenštejn

The ancient castle that lies in the hills about 1.5 km from the main road from Ostrov nad Ohří to Kadaň, surrounded by forests, creeks and meadows, was falling into disrepair after 1960s. The current castle owner has been repairing it since 2000, with the help of his friends and volunteers. Besides the quiet and romantic surroundings, the castle also offers various exhibitions, there is an arboretum and a botanical garden, tours of the Gothic basement, a view from the Gothic tower, a children's playground in the courtyard, a lot of interesting events, such as night tours of the castle, accommodation and catering. The castle has become an important cultural and social centre.



### Locket Castle

The castle rises high up on a rock above River Ohře. The fortified town with the castle used to be called the “key to the Bohemian Kingdom” by many. Locket guarded the Czech territory as early as in the 13th century. The Locket Castle is steeped with history and especially the fans of puzzling stories and mysteries will enjoy it. One of such stories that brings unanswered questions and guesses is about the “cursed burgrave” of Locket. A large rock appeared in the castle courtyard in 1422. It was first examined by alchemists and wise men, later by scientists and geologists. It is the oldest known meteorite in the world. Also, Locket organises various cultural events, various concerts take place in the outdoor amphitheatre.



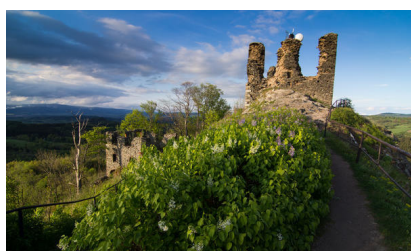
### Bečov Castle and Château

On the right bank of River Teplá, amid the romantic countryside of the Slavkovský Forest, you will find the picturesque town of Bečov nad Teplou. The main tourist attraction here is the collection of extraordinary historic and artistic architectures, the most valuable buildings are the Gothic castle, the Renaissance palace and the Baroque chateau. Since 2002, the permanent public exhibition contains a unique Romanesque relic box, the Reliquary of St. Maurus. It is the second most valuable goldsmith artefact in the Czech Republic. Visitors can choose from three guided tours.



### Hasištejn

There is a stylish restaurant in the majestic ruins of Hasištejn you can visit all year long. The castle is set romantically between the slopes of the Ore Mountains, near Kadaň. You can get to the ruins by car. The Gothic castle from the 14th century is well preserved and the palace as well as the dominant tower offer views of the countryside. The castle has had a long and turbulent history.



### Andělská Hora

A castle ruin from the turn of the 15th century above a town of the same name, about 8.5 km from Karlovy Vary, along the road to Prague. The castle ruin on the top of a basalt hill is a prominent feature of the entire area. The core of the building was the interior or upper castle, built on the highest point of the rocky ridge.

---

#### Links

*Upper Castle*

*Locket Castle  
Bečov Castle and Château*

*Andělská Hora  
Hasištejn*





## Abertamy Glove Making Museum

The exposition dedicated to the history of glove making in Abertamy is located on the ground floor of the Abertamy town hall. There are about 300 exhibits on display. You will see all the important parts of the glove making business, that is, special cutting machines, irons and other tools. There are various types of leather, various glove and lining patterns, and special glove making sewing machines.

All the exhibits on display are fully functional and you can even see the glove makers at work, as scheduled. The tour also includes a film on the production of gloves and leather dressing. The guide will tell you all about the history of glove making in Abertamy. The opening hours and the schedule for craft demonstrations can be found on the town's website.

## Horní Blatná Ore Mining Museum

The permanent exposition is dedicated to the history of mining and tin ore processing in the area of the Ore Mountains towns of Horní Blatná and Boží Dar. There are collections of mineralogy, tin crockery and models of mining technology. There is a small regional gallery. The large-scale model of Horní Blatná is a popular attraction. The museum pays tribute to the local songwriter Hans Soph (1869-1954). The museum is a part of the Horní Blatná - Vlčí jámy Educational Trail.

## Boží Dar Museum

The exposition of the Boží Dar Museum focuses on the history of this highest town in Central Europe. The museum is in the same building as the town hall and the information centre. You will also find Baby Jesus's post office there. The exhibits include a rustic room with everyday objects from previous centuries, Ore Mountains minerals, models of the lookout towers at Klínovec and Fichtelberg, things required for mining minerals and extracting peat, nativity scenes, keepsakes from the stay of Greek novelist Nikos Kazantzakis in Boží Dar and other interesting things. Admission is free.



Linsk  
Town of Abertamy  
Horní Blatná Museum  
Boží Dar Museum



## Latin School Library in Jáchymov

You can check out a unique exposition of old prints and manuscripts called the “Latin School Library” in the basement of the town hall. The collection that started in Jáchymov at the time of the silver rush in the 16th century mostly contains professional publications from various areas. The exposition also includes a bookbindery and a music room where the largest book in the collection is displayed – the Renaissance song book. The exhibition presents the mining town to visitors at the time of its greatest boom.

The books were lost for about 250 years, hidden in the town hall attic. After they were discovered, it took more than a hundred years to restore the collection and after many years, during which parts of the collection were at various places in the country, all the books, of which there were more than 200, were returned back to Jáchymov. Most volumes come from the beginning of the 16th century, but the collection also contains the Old Testament from the 13th century and fragments of texts from the beginning of the 12th century. There is a unique collection of 70 “libri catenati”, or chained volumes. It was used in school libraries to chain down books so that students could not take them away. The exposition is open from 10 a.m. to 4 p.m. every day. There is also an information centre and an Internet café in the basement.



## Jáchymov Royal Mint

The current museum exposition called “Jáchymov in the Mirror of Time” is installed in 15 halls on two storeys in the Renaissance building of the former Royal Mint from 1536. You can learn about the geology and mineralogy of the Ore Mountains, archaeological finds from the Royal Mint, ore mining in the 16th century, numismatics and minting.

The museum boasts a large-scale moving model of Ore Mountains mining works in the 16th century. Visitors can also check out the exposition that maps the labour camps in the Jáchymov area after 1948. The museum is dedicated to the memory of prominent scientist Georgius Agricola (1494-1555) whose life and work are closely related to Jáchymov.



### Links

Latin Library  
Royal Mint





# TRIPS

## LOOKOUT TOWERS

---

### Klínovec

The highest lookout tower in the Ore Mountains can be found at Klínovec, at the altitude of 1,244 m, and it is also the fifth highest lookout tower in the Czech Republic. From the tower, you can see the Czech and German peaks of the Ore Mountains, Doupovské Mountains and the Slavkovský Forest, and when the weather is good, you can even see Ještěd or Sněžka. The tower is easy to access, you can drive up to the peak of Klínovec or take the Jáchymov chair lift, open all year round.

### Plešivec

When you climb the sixty-six stairs to the sixteen-metre-high lookout tower built in 1895, rising high on the Plešivec Hill at an altitude of 1,028 m, you will be rewarded with an unforgettable and unparalleled view of the surrounding Ore Mountains, Doupovské Mountains, Slavkovský Forest, Dyleň in the Bohemian Forest, the highest mountain of the Ore Mountains, Klínovec, and also the highest peak on the German side, Fichtelberg. You will see Jáchymov, Ostrov, Karlovy Vary or Velký Rybník like in the palm of your hand.

### Blatenský Hill

The lookout tower is about 2 km from Horní Blatná, along the route of two popular educational trails, Vlčí jámy and the Blatná Water Ditch. It takes 85 steps to climb to the top of the tower where you will be rewarded with a beautiful view of the Ore Mountains from a total altitude of 1,044 metres. The lookout tower is open from 10 a.m. to 5 p.m. daily from May to October, and then on weekends from November to April.

### Bučina near Kyselka

The lookout tower on the hill of Bučina (582 m above sea level), about 1.5 km from Kyselka, was built by Heinrich Mattoni around 1880. It provides a beautiful view of the Ohře River valley to Karlovy Vary and the Ore Mountains. The observation deck, about 10 metres above the ground, is accessed by 62 stairs. The tower is freely accessible.

### Gloriett Gazebo

There used to be a gazebo on the rocky hill above Hroznětín at the turn of the 20th century. Not much is known about its history, only that it burned down in 1950s and a wind storm later destroyed whatever was left of it. A new gazebo was built in May 2018. It is made of light wood and you can enjoy the most beautiful views of the surroundings from there. When the weather is good, you can see all the way from the south of the Ore Mountains to Karlovy Vary.

### Pajndl Lookout Tower

The stone lookout tower was built by the Nejdek association of the Ore Mountains in 1895-1897, on top of the forested Tisovský Peak (977 m above the sea level), about 3.5 km from Nové Hamry. It is the fourth highest lookout tower in the Ore Mountains. It is 24 metres tall, with 114 steps leading to the observation deck. The east horizon offers a view of the peaks of Klínovec, Fichtelberg and Doupovské Mountains; in the southwest, you can see the peaks of the Slavkovský Forest, the industrial areas of the Sokolov coal basin and the towers of the Pilgrimage Church of St. Mary in Chlum, the gateway to the Cheb Region. When the weather is good, you can even see the distant peaks of the Šumava Mountains from the Tisovský Hill. The tower is freely accessible.



### Links

*Klínovec Lookout Tower*

*Plešivec Lookout Tower*

*Blatenský Hill Lookout Tower*

*Bučina near Kyselka Lookout Tower*

*Pajndl Lookout Tower*





## TRIPS

### THE SPA TRIANGLE

There are three beautiful spas in the vicinity of the West Ore Mountains Association, all three have applied to be included in the UNESCO Heritage among the Great Spas of Europe. Each spa has its own specifics, legends and hidden beauty.

#### Mariánské Lázně

The most impressive is the Neo-Baroque cast-iron colonnade from the end of the 19th century, with the beautiful Singing Fountain at the end. The impressive water patterns are created by ten jet systems, the combinations of which are computer-controlled. In the area around Mariánské Lázně, there are around 100 mineral springs, around 40 springs are directly in the town. The colonnades and gazebos covering the individual springs complete the picturesque spa atmosphere. You can taste the local cold springs, for example, at the Cross Spring Pavilion. The Bohemianum Park, the fourth largest park of miniatures in Europe, is a popular destination. It is unique not only thanks to its location in nature, but also a wide selection of detailed models of Czech landmarks in the 1:25 ratio. Near the park of miniatures, in front of the Krakonoš Hotel, there is a restored traditional fairytale trail where you can see sandstone sculptures with motifs from famous children's stories.

#### Františkovy Lázně

The pleasant spa with a series of Empire-style and Classicist buildings, located amid beautiful parks and forest parks, breathes atmosphere of the turn of the 19th century. The town was founded by Emperor Francis II in 1793 as the first peat spa in the world. The water from the local springs was not only used by the local inhabitants, but it was sold all over Germany. It is documented that the sale of the water from Františkovy Lázně in Germany in 1700 exceeded the volume of water from all the German spas. The spa symbol is a statue of a small boy with a fish (a symbol of fertility). Those who love water will enjoy the local Aquaforum, a complex of a Roman-like spa with a wellness centre. There are many places to visit around Františkovy Lázně, such as the Butterfly House in Žirovice and its tropical greenhouse full of exotic butterflies, or the SOOS nature preserve, which is a large marshland with ponds, mineral springs, an educational trail, a geological park and a museum of prehistoric animals.

#### Karlovy Vary

You simply have to see the Vřídlo spring, a unique natural phenomenon. The geyser of hot mineral water at a temperature of 72°C releases about 2,000 litres of mineral water per minute and it gushes to a height of 12 metres thanks to the high pressure. Beneath the floor of the Hot Geyser Colonnade, there is a space for pumping, distribution and thermal regulation of the geyser water. There is also a place there where the "stone roses", the famous souvenir of Karlovy Vary, encrusted with calcite from the hot geyser, are made. The old part of the geyser underground is now open for the Underground Geysers tour. Tours are provided from May to October. There are three main colonnades where you can go for a walk - Tržní, Zámecká and Mlýnská. When you have tried all twelve springs, it is time to taste the thirteenth one - Becherovka. The Becherovka Museum provides information on its history that spans over a period of more than 200 years. Visitors can look under the hood of its production and storage. The Moser Museum of Glass entices to experience the real atmosphere of the manual production of glass, a place where the magical world of crystal glass is created. The spa forests offer several lookout points, such as the Diana lookout tower, Goethe's scenic point, or the Three Crosses. Children and adults alike can put their physical capabilities to test in the natural rope climbing centre at the Svatý Linhart Park.



#### Links

*Mariánské Lázně*

*Boheminium Park*

*Františkovy Lázně*

*Aquaforum*

*Butterfly House*

*SOOS Nature Reserve*

*Karlovy Vary*

*Jan Becher Museum*

*Moser Visitor Centre*

*Linhart Rope Climbing Centre*



# TRIPS

## BICYCLE TOURING AND HIKING

### Ore Mountains Artery

Most cycling trails in the Ore Mountains follow the Ore Mountains Artery. It is used by cross-country skiers in winter and by hikers and cyclists in summer. There are more than 400 kilometres of trails, providing a sufficient choice of terrain at various levels for both recreational and professional cyclists. You can even cycle to the neighbouring Germany and follow the Saxony trails that connect at the border crossing. The Ore Mountains are interwoven with kilometres of hiking trails that often follow cycling trails. You can combine the individual trips according to your liking and energy.

### Karlsruhe - 04 Secondary Route of the "Ore Mountains Scenic Points"

Karlsruhe is a cross-border hiking and cycling trail between the towns of Karlovy Vary and Aue. The secondary route of the "Ore Mountains Scenic Points" is 35 kilometres long. It has an elevation gain of 680 metres with various surface. The section between Potůčky and Hřebečná is especially suitable for more experienced cyclists. As an alternative route, you can use the paved road through Háje and Rýžovna. The route provides various opportunities to enjoy views of the impressive landscape of the Ore Mountains. It follows partially public, less or more used roads and can be combined with a train.

### Ohře Cycle Path

The cycle path long River Ohře is suitable for all cyclists. The light route without any serious elevation gain is 110 kilometres long and it goes through the regions of Cheb, Sokolov, Karlovy Vary and Ostrov. Some of the interesting stops along the way include the Bernard Farm, which is the centre of crafts in the Karlovy Vary Region, the royal town of Locket, or the protected natural formation Svatoš Rocks with numerous rock pillars, prisms and pyramids. The rocks encompass an area of 2 hectares and their shapes resemble a wedding procession. The safe cycling path ends in Dalovice, from where you continue along roads, but the cycling path is still marked. The final part of the path is hilly and follows regular traffic, so it is not suitable for small children.

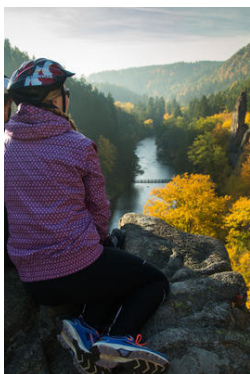
### Ostrovsko

Ostrov and its surroundings offer a lot of landmarks thanks to the historical development for more than 700 years. Its convenient position between two spas at the gateway to the Ore Mountains also provides an ideal starting point for enthusiastic tourists. There are plenty of destinations to choose from, as well as a dense network of trails, both for hikers and those who prefer bicycle touring. You can find all about the interesting tourist destinations, cycling paths and hiking trails at the [town's cycling portal](#).

Several cycling paths connecting the surrounding villages and offering easy rides for families with children also pass through the town of Hroznětín. There is a new rope climbing centre along the Hroznětín-Ostrov route, in the village of Bystřice. You can then continue from Hroznětín towards Merklín, or to the recreational area of Velký Rybník in the south.

*In addition to the hiking trails marked by the Czech Tourist Club (KČT), using red, blue, green and yellow marking, the region also offers several interesting educational trails where you can learn about the history, nature and interesting local facts (see page 10).*

You can use the regional  
[Karlovy Vary bicycle public transport](#).



### Links

[Cycling Trails – Mountains](#)  
[Karlsruhe](#)  
[Ohře Cycle Path](#)  
[Karlovy Vary Cycling Portal](#)  
[Ostrov Cycling Trails](#)  
[Ostrov](#)  
[Hiking in Boží Dar and Surroundings](#)  
[KČT Trail Planner](#)  
[Bicycle Public Transport](#)

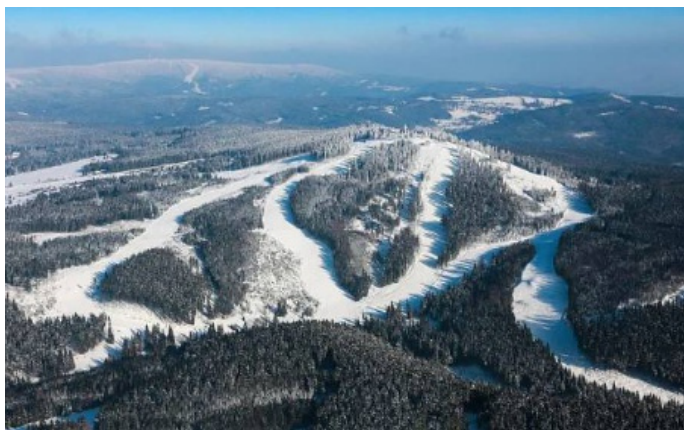


# ORE MOUNTAINS IN WINTER

## Ski Resorts

### Plešivec

The construction was completed in 2014. There are twelve kilometres of groomed ski slopes with 100% technical snow coverage for all levels. The main slopes are from 50 to 80 metres wide, the longest one is 4.2 km. There are ski-bars and restaurants on the slopes. Children can ski in the children's park, equipped with four magic carpets. There is also a playground in the resort.



### Náprava Jáchymov

The ski resort is situated right above the Jáchymov Spa at an elevation of 800-930 m and it offers downhill slopes of all difficulties, which are regularly groomed and some of them are equipped with artificial snow machines. There are three ski lifts, one of them modified to accommodate small children and beginners. A ski school, evening skiing, artificial snow, ski rental, ski service, free parking, restaurant, accommodation.



### Pod nádražím Pernink

There are three ski lifts (250, 300 and 700 m) with artificial snow. There is a rental shop with skis, cross-country skis, snowboards and helmets for children, a "baby lift" with a ski school, and evening skiing. There is a ski school for children and adults, and a snowboard school. Children's snowmobile rental. Ski accessories shop. Refreshments.

### Potůčky

Skiing every day from 9 a.m. to 4 p.m., then evening skiing. A ski tow, 555 metres long, a ski tow for children, car park next to the tow, a stylish timbered cafeteria with an indoor playground, a ski rental. Accommodation on the ski slope. A snow park with hurdles for advanced skiers and snowboarders. The ski resort has won the gold medal of the TV Nova winter commissioner.

### Nové Hamry

A smaller ski area called Nad kostelem at the foot of the Dvorský Hill. It is mostly suitable for families with children, beginners and moderately advanced skiers. It is located in the centre of the village. Refreshments are available in the resort.

### „Velflink“ Pernink

It is mostly suitable for families with children, ski training. There are artificial snow machines in the whole area and it is groomed daily. There is also evening skiing. Complete beginners can use the services of the experienced instructors in the ski school located at the resort. There is a cafeteria with seating areas.



### Links

Plešivec  
Náprava  
Pernink Pod Nádražím  
Pernink Velflink  
Potůčky  
Nové Hamry





# ORE MOUNTAINS IN WINTER

## Novako Boží Dar

It is mostly designed for beginners, families with children and seniors, and you will find in the centre of the village. Visitors can use the services of the perfectly equipped ski and snowboard rental and service, the ski school, children's ski playground, cafeteria and ski clothing shop. There is a magic carpet for the littlest ones. Evening skiing. There are artificial snow machines in the whole area and it is groomed daily. There is also snow tubing - riding tubes on an icy slide.



## Cross-Country Skiing

Cross-country skiing is one of the most popular winter sports in the Karlovy Vary Region, which provides excellent conditions for the sport. There are hundreds of kilometres of groomed cross-country ski loops and trails, often leading to Germany, connected to the trails there.

## Ore Mountains Artery

This is the arterial trail that runs along the ridge of the Ore Mountains and is almost 41 kilometres long. It connects the winter resorts and settlements in the Ore Mountains, from Bublava through Rolava, Jelení, Pernink and Hřebečná to Boží Dar. It is regularly groomed along its entire length and you can easily get to it thanks to the extensive network of connecting trails from Abertamy, Horní Blatná, Nové Hamry and a number of other locations.

### Tips

- The cross-country trails around Abertamy, Boží Dar, Horní Blatná, Pernink and Boží Dar are available on the Live Region portal. You can also download an application for your phone. Other information and maps are available at the Active Ore Mountains portal.
- The trail to Horní Blatná starts below the water tower in Potůčky, you can return back past Strašidla, across Stráně.
- Near the Pernink Velflink ski area, there is an illuminated loop trail for cross-country skiing.
- The Pod Nádražím Pernink ski resort offers a training loop for beginners.
- The short loop trail "around the lump" in Abertamy is also groomed and it is near the car park.

## Klínovec

The largest ski resort in the Ore Mountains. 31.5 kilometres of downhill slopes with 5 chair lifts, 11 ski lifts and 5 ski belts in children's parks. The multi-day ski passes are also valid in the neighbouring ski resort of Fichtelberg in Germany. There are several restaurants, fast food stands, ski bars and apres-ski tents to choose from, with fresh food and drinks of all kinds prepared daily.

## Neklid Boží Dar

The resort became a part of Nový Skiareál Klínovec in the 2018/2019 season. Both ski resorts are now connected by the blue downhill slope. At Neklid, there are five slopes with a length from 300 to 1,000 metres with various levels of difficulty. There is also a snow park with some great equipment. There is a sports equipment rental, a ski and snowboard school and a cafeteria.

## Boží Dar

It is located in the centre of the village. There are five slopes with a length from 300 to 600 metres with various levels of difficulty. There is a sports equipment rental, a ski and snowboard school, a cafeteria and public bathrooms.

## Fichtelberg - Kurort Oberwiesenthal

The largest ski resort in East Germany. In addition to downhill slopes and cross-country ski trails, there is also a ski jumping hill, a snow park and snow tubing. Skiers can choose from nine downhill slopes according to the difficulty level. There are various cafeterias, ski rentals, ski schools, and so on.



Živý kraj



### Links

Novako  
Klínovec  
Nový Skiareál Klínovec  
Boží Dar  
Ore Mountains Artery  
Cross-Country Ski Trails  
Active Ore Mountains



# INTERESTING FACTS OSTROV

Ostrov, as the largest town in the foothills of the central Ore Mountains, offers a lot of interesting things, from history through culture to hiking. We have prepared seven most interesting tips for places in the town that you should definitely see when there.

## Ostrov Monastery Area – the Holy Precinct

The Ostrov Monastery Area is a place that contains a large number of monumental Baroque buildings from the 17th and 18th century on quite a small area. The original Piarist Monastery is now used as an apartment building. But you can look inside the adjacent Church of Annunciation of the Virgin Mary with the chapels of St. Anne, St. Florian and the Virgin Mary of Einsiedeln. The monastery church has an exhibition on the Regional Art of the West Ore Mountains with an accompanying exhibition entitled Destroyed Churches of the Karlovy Vary Region. The tours are provided by the local Information Centre branch.



## Chateau Park with Summerhouse and the Prince Palace

The eighth wonder of the world! That's what the chateau park in Ostrov, built by the local dukes of the Saxe-Lauenburg family between the 17th and 19th century, used to be called. The park was originally founded as a French Renaissance garden with numerous fountains, ponds, artificial rocks, glories and gazebos. There was a maze to entertain the nobility. However, the garden started to slowly transform into a landscape park, following the new trends in the 19th century. Most structures were removed, as well as the art decorations and water components. Today's park comes from the second half of the 19th century. There is a gazebo in the centre, sometimes also called the palace of princesses, used for various leisure activities from the 17th century. Today, it is used as an art gallery and you can also visit various art workshops and other regular events for the public there, besides the exposition of 20th century art.

## Ostrov Chateau with National Cultural Monument – the Schlick casket

Not much is known about the history of the Ostrov Chateau before it was acquired by the noble Schlick family in the 15th century. The family gradually improved the chateau and turned it into their family home. And that is when the history of the place started. One of the local lords, Joachim Andreas von Schlick, was one of the leaders of the Bohemian Revolt and also one of the twenty-seven lords executed at the Old Town Square in 1621. The estate was then transferred to the hands of the famous dukes of the Saxe-Lauenburg family who continued to develop it. Today, mostly official documents are drawn up there, besides much less dramatic history. There are also some unique expositions that you can turn with the staff of the information centre that is in the chateau.



Links

Town Tourist Portal





# INTERESTING FACTS OSTROV

## Ostrov Porcelain Exposition

You will find two valuable expositions on the Ostrov Porcelain in the chateau parlour and in the summerhouse, included in the international project of the Porcelain Route / Porcelan Strasse. It goes through more than twenty places in West Bohemia and Bavaria and illustrates the important history of porcelain manufactures of a global importance in the 19th and 20th century. The Ostrov Porcelain, known as "Schlackenwerth" from the Pfeiffer and Löwenstein manufactures has always been known for its high quality. The collections you can find in the Ostrov expositions were compiled by the association of the friends of Ostrov to commemorate the rich history and the importance and quality of local products at their time.



## Borecké Ponds, Educational and Hiking Trails

The system of the Ostrov ponds was founded in the 16th century and the ponds were not only used for breeding fish, but also for irrigating the adjacent fields. There are nine ponds in the system of the Borecké Ponds as we know them today. You can find a lot of protected animal and plant species, including the great crested newt, on an area of more than four hectares. Today, this unique area is mostly used for leisure purposes of the Ostrov residents. The educational trail that goes through the area is also very popular with tourists. If you take the trail, you will learn about the history, present and the natural wealth of the locality. The numerous paths around the ponds are lined with various rest areas and benches. There is also a public fire pit, or lookout piers.



## Ekocentrum, Sportpark, Swimming Pool

The Ostrov Ekocentrum, the sports park with a large air trampoline and a rope climbing centre near the hospital, or the local swimming pool with a tunnel slide are especially designed for families with children. (see *Not Only for Children* on p. 16 and 18).

## Cultural Events of Regional Importance

The town of Ostrov and its organisations offer a wide range of cultural events not only for the residents, but also for visitors from near and far. The most important ones include:

- Monastery Festival (May)
- Day for Ostrov and Its Partner Towns (June)
- Family Day in the Park (August)
- Popular summer concerts in the chateau park
- Ota Hofman's Children's Film and Television Festival (October)

There are many more, smaller events throughout the year.

[Links](#)



OSTROV

Town Tourist Portal  
Kalendář akcí





# INTERESTING FACTS UNESCO MONUMENT

The mining monuments in the Saxon and Bohemian Ore Mountains were inscribed in the UNESCO World Heritage List on 6 July 2019. The Erzgebirge/Ore Mountains Mining Region, which is the official name of the joint Czech and German nomination, consists of 22 parts, out of which 17 are in Saxony and five in the Bohemian Ore Mountains. Together, these parts document the huge importance of ore extraction and processing on both sides of the mountains in the development of mining and metallurgy all over the world. The Czech part is represented by:

## Jáchymov Mining Landscape

It contains the historic centre of the town and its surroundings with the most important landmarks documenting mining in the former Jáchymov mining area from the 16th to the 20th century. In the 16th century, Jáchymov soon became the largest centre of the extraction of silver in the Ore Mountains, Europe and in the world. From 1840s, uranium ores started to be extracted in Jáchymov for the first time in the world. In 1898, Marie Curie-Sklodowska and her husband Pierre Curie isolated two new radioactive components, radium and polonium from the Jáchymov uranium ores. In 1906, a radon spa was founded there to treat musculoskeletal disorders, it was the first spa of its kind in the world. After WWII, the Jáchymov mines were the first ones that the Soviet Union started to use to extract uranium ores required for making the nuclear bomb. That happened in 1949. The monuments related to the uranium mining are also closely related to the establishment of labour camps in the 1950s.

## Abertamy – Boží Dar – Horní Blatná Mining Landscape

It is an example of an extensive relic mining landscape that provides an exceptional evidence of the extraction of tin, iron and other ores from the 16th to the 20th century. The large placers (heaps) near Boží Dar document the huge extent of tin panning in the highest parts of the Ore Mountains as early as in the 16th century. The still functional Blatná Water Ditch is a unique technical construction that proves how advanced water managers were in the 16th century.

## The Red Tower of Death

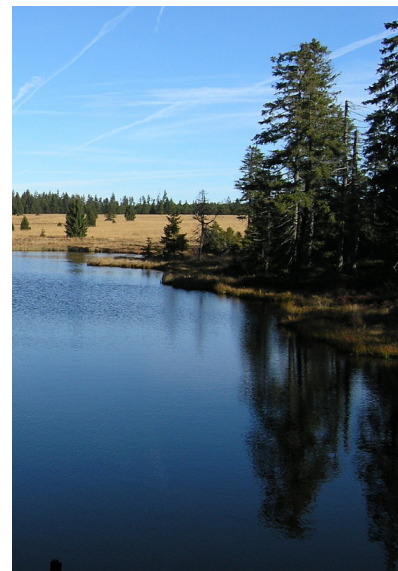
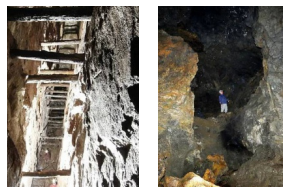
It was originally used as a central crushing and sorting plant of the uranium ore extracted not only in Jáchymov, but also in other places in Czechoslovakia. It reminds us of the times of massive uranium extraction in the 1950s. This national cultural monument is a symbol of the suffering of political prisoners who were held captive in the Jáchymov labour camps under inhumane conditions.

## Krupka Mining Landscape

The oldest tin field in the Ore Mountains that had a significant effect on the development of knowledge of tin deposits and the method of their extraction. The Krupka mining area of Steinknochen is especially noteworthy as it contains an extraordinary concentration of late medieval and early modern mine works.

## Mědník Mining Landscape

An authentic mining landscape that documents various methods of extracting iron, copper and also silver ores. Thanks to the uncovered terrain and good accessibility, Mědník is a unique study area where you can see the individual historic stages in uncovering deposits from minor surface extractions to mine pits and adits with underground mining. There are over 80 pits and adits on the hillsides of Mědník. Around 1520, the mining town of Měděnec was founded at the foot of the hill as a centre of the local mining industry.



[Links](#)

*Ore Mountains Mountain Region*



## INTERESTING FACTS ACCESSIBLE ADITS

The Mauritius mine or the Johannes and No.1 Jáchymov adits are definitely worth a visit. We recommend booking a tour in advance. Opening hours and booking at the provided links (see below).

### Mauritius Mine - Kryštof Adit

This mine is a part of the Hřebečná tin field and it is the largest and deepest tin mine in the Czech part of the Ore Mountains, declared a national cultural monument in 2014. It includes the Kryštof adit. The deeper parts of the mine, below the level of the Kryštof adit, are currently only accessible with the use of speleological methods, up to a depth of about 100 metres below the ground. That is approximately 15-30 m above the level of the main Blasius hereditary adit. The mine is flooded below that. The not-flooded underground of the mine consists of a system of horizontal hallways, vertical shafts and extraction chambers. The not-flooded part of the largest chamber is 60 metres long, 40 metres high and 15 metres wide, however, it most likely used to reach the deepest parts of the mine in the past. The preserved fragments of the older parts of the mine often have a very regular oval profile, typical for extraction by heat. The extraction chambers contain a large number of dry walls, there are also spaced with carved niches for attaching beams and load-bearing structures for water mining machines.

### Johannes Adit

The skarn area called the Golden Hill (formerly Kaff) is one of the most interesting ore mining areas in the Czech Republic; it is located on a steep slope above the right bank of the Zlatý Stream, in the vicinity of the state border with Germany. The largest mine in the area was Johannes, which was in operation without any significant breaks from the 16th century to the 1870s. Mining surveys were done there in the 1920s and again in the 1950s and 1960s. It is an exceptionally preserved complex of historic mine works where miners created huge underground chambers that can hardly be seen anywhere else in the world. That makes the Johannes Mine completely unique. These unique chambers, the largest one with floor plan dimensions of 60 x 20 m and a height of 10 to 12 m, can now be seen by anyone who goes down the Johannes Mine. Take a walk through 500 years of mining history in two hours.

### No.1 Jáchymov Adit

Between 1 July to 1 September 1952, No. 1 Adit was dug through along 220 m to check for the occurrence of uranium mineralisation and that was an impressive work at that time. The digging went through old mine works from the 16th century along the Jan Evangelista seam, which were followed by a short corridor. The survey works ended in the mid-1950s. The whole workplace was connected to the Svornost Mine with a fenced corridor. Massive bars were mounted to the surface of the adit orifice to prevent prisoners from escaping and these bars have been preserved in the adit, which is now used for tours. The adit also presents various examples of supports (wooden, steel, bolt), mine carts and manual mining tools (jackhammers, hammer drills) used in the uranium mines after WWII.



### Mine Trip Tip in Germany

The "Glöckl" mine in Johanngeorgenstadt on the Saxon part of the Ore Mountains, in the vicinity of the Potůčky border crossing, is open to the public. The ores of tin, silver, iron and later bismuth and uranium were extracted there from the 16th century. The ownership of this area alternated between the Bohemian Crown and Saxony in the 15th and 16th century. Visitors can try what it is like to be a miner and experience how difficult and demanding work that was and under what conditions metal ores used to be extracted at that time.

### Links

*Ore Mountains Mountain Region*

*Mauritius Mine*

*Johannes Adit*

*No.1 Jáchymov Adit*

*Glöckl*





# INTERESTING FACTS

## THE PATRON OF THE ORE MOUNTAINS

Mystery is an inherent part of the Ore Mountains landscape and it is no wonder that the mysterious stories from the local forests, meadows, gorges and ancient mining works are told among people here and there. There are several different ghosts and creatures in the Ore Mountains but one of them rules them all, not only in the chronicles, but also in the countryside. It is nice that the most famous legend of the Ore Mountains is about a girl. Her name is Marcebila, sometimes called Marybila or Mařebila. Just like her name changes, so does her appearance. For some, she is a tall skinny old woman, others see a peasant woman or a petite girl. But what everyone agrees on is the colour of her hair. It is dark and mixed with her misty veil. In 2012, people elected her as the patron of the Ore Mountains in a poll.

### The Legend of "Marcebila"

A long time ago, a beautiful girl named Marcebila lived in the Ore Mountains. She used to live at her father's chateau, on a mountain called Bartelwulfenberg. Many young men, knights and mining tradesmen wanted to marry her. But she was already in love. Her heart belonged to young Siegfried from the Sonnenberg estate. Marcebila's father's neighbour, the Knight Kuno of Hassberg, tried to convince him to marry Marcebila in exchange for the protection of his gold panning areas and adits.

Marcebila refused to do that and left for the Kadaň cloister. When she returned, she told her father that she had to marry Siegfried within a year because she got engaged to him in secret. Kuno could not deal with the happiness of the engaged couple and he killed the newly-wed husband in a jealous rage in a tournament after the wedding. Marcebila threw herself on lethally injured Siegfried and took off his knight glove and put it on. She left her birth chateau and disappeared in the dark woods forever. She soon took vengeance. A heavy storm destroyed the walls of Hassberg and the treacherous Kuno was burned to death by a flame tongue that appeared from the depth of the Ore Mountains.

### The Empress of the Ore Mountains Today?

Those who looked for Marcebila found out that she was a torn woman at around the age of thirty, living alone with her curse. She fights with loneliness and anonymity, secretiveness of people and the fear of the unknown. She feels empty due to her loneliness and she needs to fill her heart and soul with stories. When people meet her and talk to her, share their experience with her, she is happy. But if you do not pay attention to Marcebila, you will be punished.



### Links

*Through the Ore Mountains with Marcebila*

*West Ore Mountains Georegion*

*Ore Mountains Horror Stories*



### Explore the municipalities in our micro-region in a fun way

- Take a walk through all 20 villages with the legend of the Ore Mountain with the Geofun app game. The game is not geolocation-based and can be played anywhere.
- Try other geolocation games in the field
- Learn about Marcebila and other stories of the Ore Mountains in the Ore Mountains Horror Stories.







### Rest amid Nature

#### Červená Jáma Cafeteria

In Přední Hřebečná, near a mine depression called Červená jáma, you will find a cottage as if from a fairytale. There are signs pointing to this place at almost all crossroads and forest paths around Horní Blatná, Bludná, Pernink or Hřebečná, stating the number of kilometres left to this place.



The pleasant cafeteria in an amazingly peaceful and quiet countryside daily offers home-made soups, pies, roasted sausages, hot and cold beverages, both alcoholic and non-alcoholic. Cyclists, hikers and cross-country skiers in winter can use both the outdoor seating and the cosy room with a fireplace, with wood and soil insulation protecting guests from the outside weather.

### Traditional Home Cooking

#### Bistro Abertamy

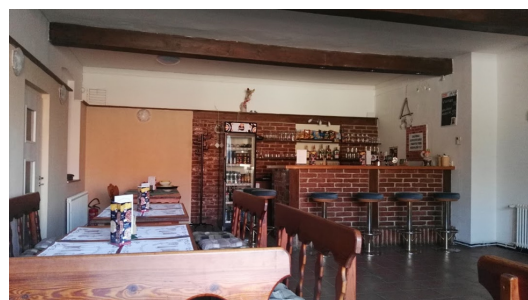
Horský statek Abertamy in the centre of the town invites to their bistro with simple but time-tested traditional Czech meals – home-made broth, tomato soup, goulash, fruit dumplings and other popular delicacies. Have it with a pint of cold beer, juice, or a cup of hot coffee. You can enjoy your lunch, as if made by your grandmother, in a pleasant, wood-covered dining room. When the weather is good, you can sit on the small terrace outside. The bistro also includes a butcher's and cheese shop where you can buy fresh meat, good farmer's smoked meat, sheep, goat and cow cheese, yoghurt and milk.



### Cosy Gathering

#### Jenišovská hospůdka

A small, cosy restaurant suitable for having a beer or wine with your family or friends. The inn offers traditional Czech cuisine. The restaurant also provides lunch specials for reasonable prices. There are various savoury snacks that go well with beer and wine. Once or twice a month, they organise country and folk music evenings. There are various events throughout the year, such as the pig feast. The restaurant is also suitable for birthday parties or company parties or training.



### Sweet Pleasure

#### Otovice Patisserie

The patisserie is in a beautiful quiet place with an outdoor terrace and a large oak tree. The cakes are always fresh as they are made right there. The excellent home-made cakes from regional ingredients and a long tradition are best eaten with a cup of quality coffee. In summer, you can enjoy the traditional soft-serve ice-cream.

#### Links

Červená Jáma Cafeteria

Bistro Abertamy

Jenišovská hospůdka

Otovice Patisserie



### Gastronomic Adventures

#### Červený vlk Brewery

It opened in May 2020, in the heart of the Ore Mountains at Boží Dar. The wooden building of the micro-brewery perfectly fits in the local architecture. They make seven different beers. The brewery also includes a restaurant that offers both cold and hot meals of high gastronomic quality. Guests can also sit on the terraces outside.



#### Faustův dvůr

This restaurant in Horní Blatná offers modern gastronomy in the French style. The famous steak from Australian and American Black Angus beef that cannot be purchased in any shop or butcher's make this restaurant truly exclusive. It is recommended to book a table in advance if you want to enjoy an unusual culinary experience in the original Baroque spaces.



### Not Just a Cultural Experience

#### Velichovská hospoda u Lípy

Enjoy a great beer, traditional Czech cuisine and friendly servers in the Hospoda u Lípy pub in Velichov. Various events take place there throughout the year, such as the traditional pig feast, a beer procession or various balls. Also, there are concerts by both domestic and foreign musicians there. The pub attracts guest with quality music. There is outdoor seating and the pub also provides accommodation. There is a beer raft on the river for those who love water.



### Terrace Gathering

#### Tina Restaurant

A picturesque family restaurant in the centre of the mountain town of Pernink, ideal for families with children. The restaurant has a private room for thirty people. The sunny summer terrace right by a creek provides for a pleasant gathering. The restaurant has a daily lunch menu for reasonable prices. The mostly Czech cuisine is accompanied with about twenty made-to-order meals. The friendly staff will help you with what to see in the surroundings. You should definitely try the home-made apple strudel. In winter, you have to try the mulled wine. Recommended by the guests.

#### Links

Červený vlk Brewery

Faustův dvůr

Hospoda u Lípy

Tina Restaurant





### Unique Island of Scandinavian Nature

#### Pernink Marshland

In the second half of 2019, the Forests of the Czech Republic reclaimed the most damaged area of the Pernink Marshland that is over twelve thousand years old. To revive the marshland, it is essential that the water reaching the surface is at a high level. It is a necessary condition for the development of the marsh vegetation, especially peat moss that creates the peat.

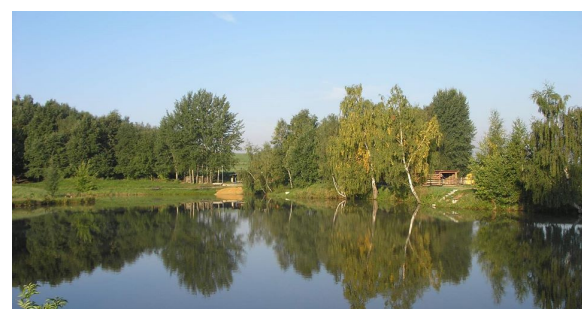
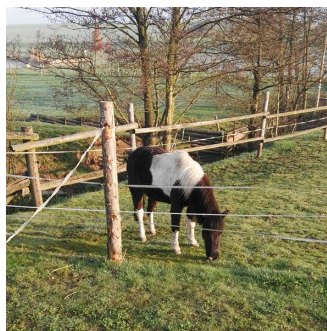
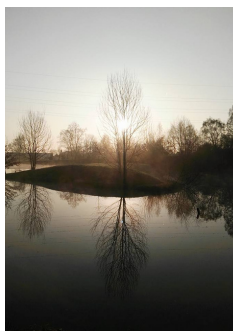
Therefore, 390 retaining dams of three types were built, as well as two stone weirs and 2.7 kilometres of ditches. There is a new cascade with 24 low detention basins made of peat that slow down the surface flow of precipitation water and promote absorption. Also, eight ponds were created. There is an educational trail leading through the locality with a boardwalk, a lookout tower and an observation pier above one of the ponds. The Pernink Marshland is a model example of cooperation between scientists and rangers and an inspiration for the reclamation of other marshlands in the Ore Mountains. In 2015, the Pernink Marshland was declared an important European locality in the Natura 2000 system and it is a protected natural monument. It is one of three marshlands that have been reclaimed in this way and to such extent in the Czech Republic. It is quite difficult to do and this is the largest reclamation in the Ore Mountains. The other ones were reclaimed in the Šumava Mountains.



### Relaxation

#### Oáza - Jenišov Resort

This area is a place that the local residents consider to be a point of relaxation where one can enjoy nature, strolls along horse enclosures and fishing. It is also a place where people meet. The resort contains a fire pit, a pond and an amphitheatre where concerts, events for children, theatre performances and fishing competitions take place during the year. If you want to enjoy the unique atmosphere of a summer outdoor cinema, this is the place to be. The Čadík Brothers bring their outdoor cinema here at the end of the school year every year.



#### Links

Pernink Marshland  
Oáza





### Abandoned Village

#### Königsmühle / King's Mill

Königsmühle is a fairytale abandoned village. There used to be six houses there and 57 people lived there. Today, there are six ruins there and beautiful nature. The inspirational place is hidden from the eyes of tourists and yet, it is not even a kilometre away from civilisation in the heart of the Ore Mountains. It is located about 2 kilometres away from Loučná pod Klínovcem, at an altitude of 915 metres, below the spring of the Černá voda stream, in a shallow valley surrounded by forests and beautiful mountain meadows. The settlement ceased to exist after people were displaced in 1950s. It is a completely unique place with respect to the preserved ruins in nature. All the buildings that were there in 1945 are still there to this day, although they are just ruins.

The place has inspired a lot of artists and it has become a place of a regular land art festival where visitors from the Czech Republic and Germany meet. The whole valley where the village used to stand transforms into one huge work of art. Various paintings or sculptures are made there. Artists are allowed to use the old construction material, wood and other biomass in the spirit of land art. Their works usually depict the dramatic fate of the former Sudeten inhabitants. The ruins of the former village become the homes of the individual works of art. The works of art stay there and complete the unique character of this place.

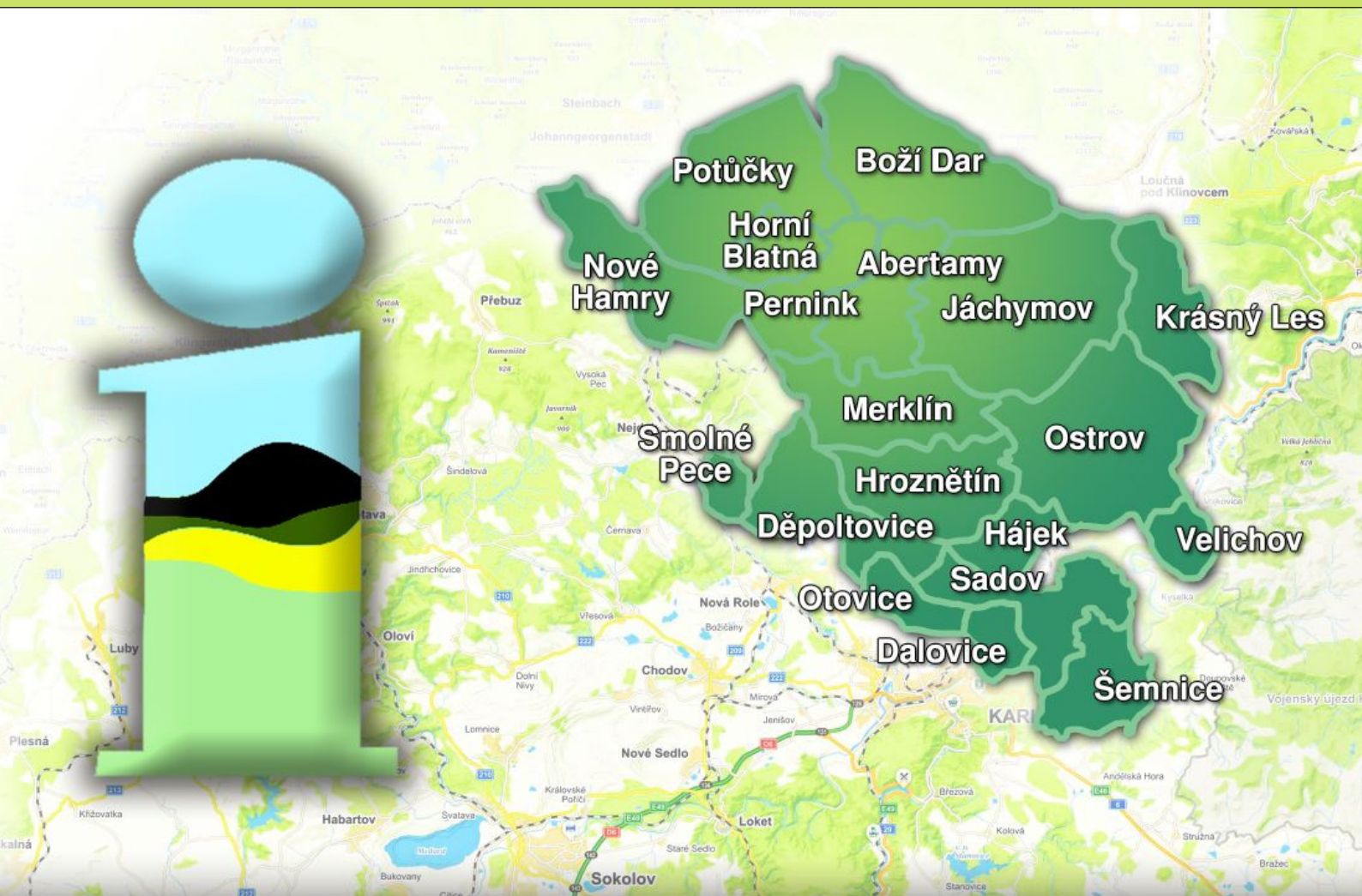


*Note: Land art is an art style from the 1960s, created in the USA: Artists create their works in nature, at sites that are difficult to access and untouched by people.*



[Links](#)  
Königsmühle





# Sdružení Krušné hory - západ

## POCKET ELECTRONIC TRAVEL GUIDE TO THE WEST ORE MOUNTAINS

Published by:

**Sdružení Krušné hory - západ**  
(West Ore Mountains Association)

Klínovecká 1407

363 01 Ostrov

[krusnehory@volny.cz](mailto:krusnehory@volny.cz)

2020

